

Class of 2025 Senior Outcomes



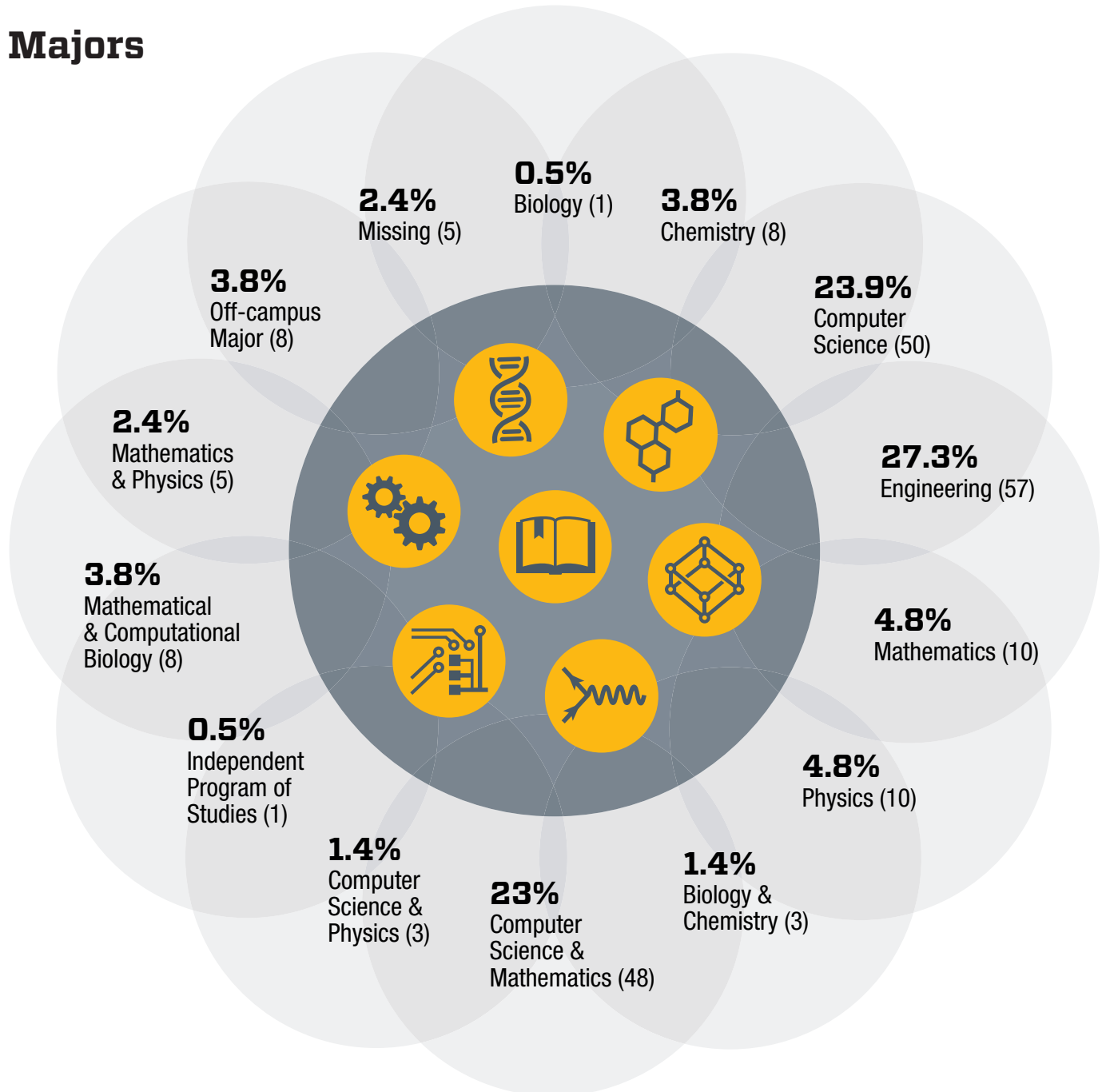
**HARVEY
MUDD
COLLEGE**

Student Affairs
Office of Career Services

2025 Senior Survey Responses

207 valid responses/205 students (91% response rate)

Majors



Demographics

44.0%/47.3%
Woman (91)/Man (98)

5.8%
Non-binary (12)

7%
No response (14)

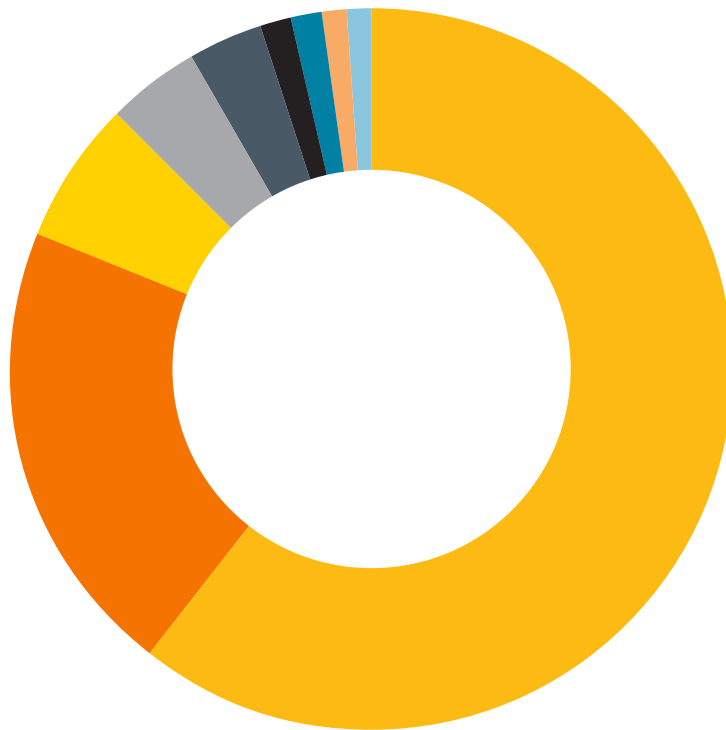
2.4%
Transgender (5)

81.2%
First-generation (168)

36.2%
*Historically underrepresented (75)

*Respondents self-select into this category, which contains members of the following groups: African American [Black], Native Hawaiian/Pacific Islander, Hispanic/Latinx or Native American

Plans for Fall 2025



- **60.9%** Employment (126)
- **20.8%** Graduate School (43)
- **6.3%** Gap Year (13)
- **4.3%** Don't Know (9)
- **3.4%** Internship (7)
- **1.4%** Other (3)
- **1.4%** Volunteer/National Service (3)
- **1.0%** Fellowship/National Award (2)
- **1.0%** Missing (2)



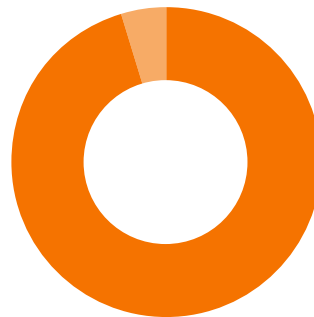
Employment Info



- **63.5%** Accepted position (80)
- **36.5%** Still seeking (46)



Grad School Info



- **95.3%** Accepted (41)
- **4.7%** Waitlisted (2)



Employment Info

Median Salary	\$124,999.50
Median Bonus	\$19,000
Median Housing Allowance	\$7,000

Received any of the following:

Bonus	57.5%
Stock Options	38.8%
Housing Allowance	50.0%

Top Three Employers

1. Microsoft (6)
2. McMaster-Carr (4), Nutshell Labs (4)
3. Amazon (2), Bloomberg (2)

Three Most Important Criteria When Choosing an Employer

1. Starting salary
2. Intellectually challenging work
3. Work/Life balance



Graduate School Info

Degree Pursued

PhD	63.4%
M.A./M.S.	31.7%
Other	4.9%

Top Graduate Schools

- CU Boulder (3), Northwestern (3), University of California, Los Angeles (3), University of California, San Diego (3)
- Stanford (2), University of California, Berkeley (2), University of California, Santa Barbara (2), University of Chicago (2), University of Southern California (2)

Top Fields of Study

- Chemistry, Computer Science
- Mathematics
- Data Science, Physics

All Graduate Schools

Caltech	NYU Center for Data Science	University of Chicago
Carnegie Mellon University	Ohio State University	University of Colorado, Boulder
Colorado School of Mines	Princeton University	University of North Carolina at Chapel Hill
Emory University	Stanford University	University of Pennsylvania
Georgia Institute of Technology	University of British Columbia	University of Southern California
Leeds Beckett University	University of California, Berkeley	University of Washington
Massachusetts Institute of Technology	University of California, Irvine	York University
Michigan State University	University of California, Los Angeles	Youngstown State University
New York University	University of California, San Diego	
Northwestern University	University of California, Santa Barbara	

All Employers

Accenture	Diderot	Naval Nuclear Laboratory
Adobe Inc.	Electromagnetic Systems Inc	Nutshell Labs
Affirm	Ellison Medical Institute	Nvidia
Amazon	Enovis	Optiver
Amazon Web Services	F5	Plaid
American Express	Freyer & Laureta Consulting Engineers	Pylon
Anysphere	Google	Qualcomm
Apple	Higher Ground LLC	Ramp
Arrowstreet Capital	Honeybee Robotics	Rippling
Aurora Energy Research	In-Q-Tel	Seizmic Inc
Bain & Company	InterSystems	SpaceX
Bloomberg	Jane Street Capital LLC	Stripe
Boston Consulting Group	Kairos Power	TrellisWare Technologies
Burns and McDonnell	Mainstream Engineering	Tudor Investment Corporation
CalTech	Masimo	Walmart
Carnegie Robotics	Mastercard	Watershed
Charter Communications	McMaster-Carr	Webflow
Crusoe Energy	Meta	
Databricks	Microsoft	

