

Class of 2022 Senior Outcomes

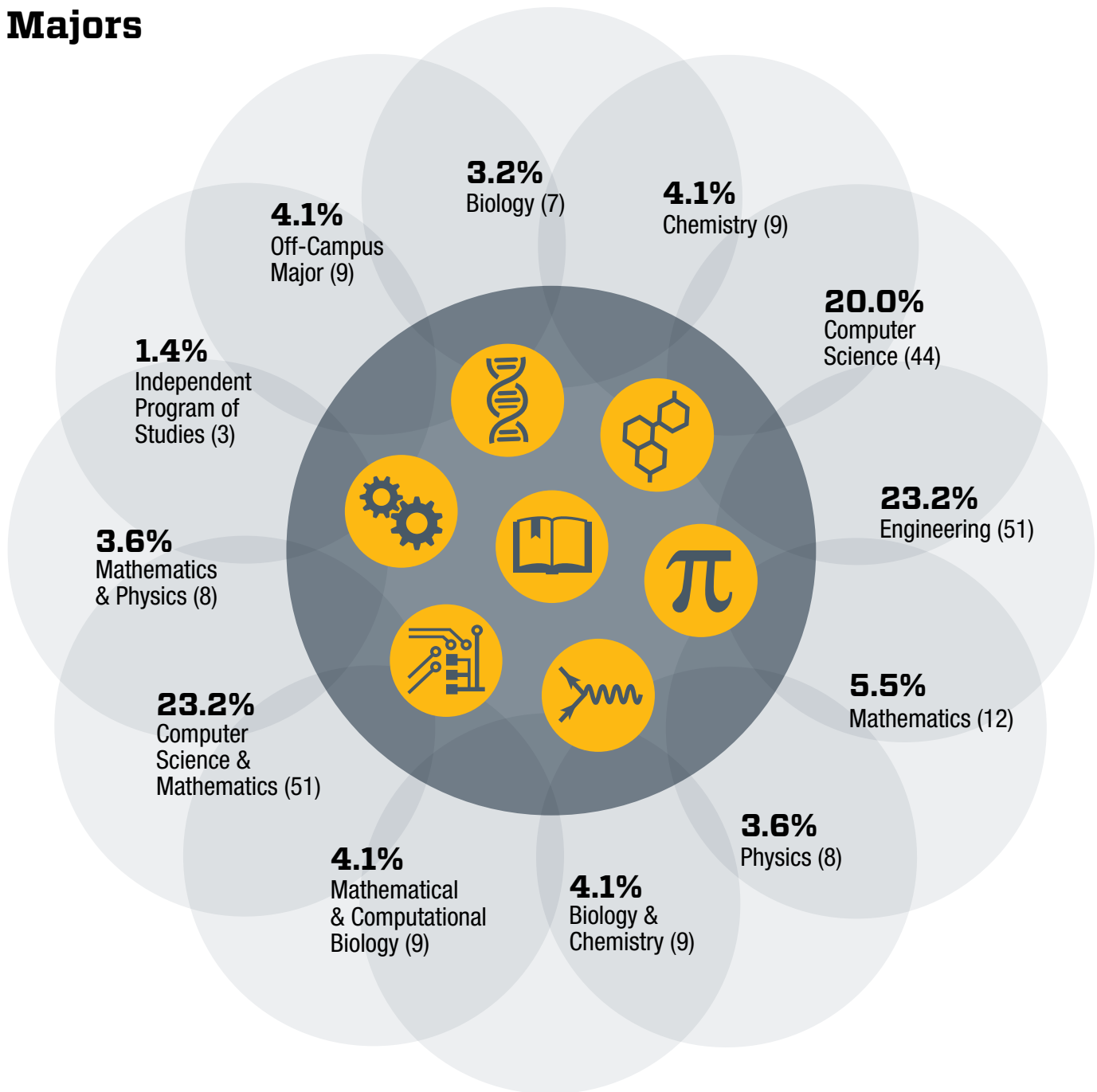


**HARVEY
MUDD
COLLEGE**

Student Affairs
Office of Career Services

2022 Senior Survey Responses

Majors



Demographics

48.6%/46.2%
Female/Male

4.3%
Non-binary/Other (9)

1.0%
Another gender (2)

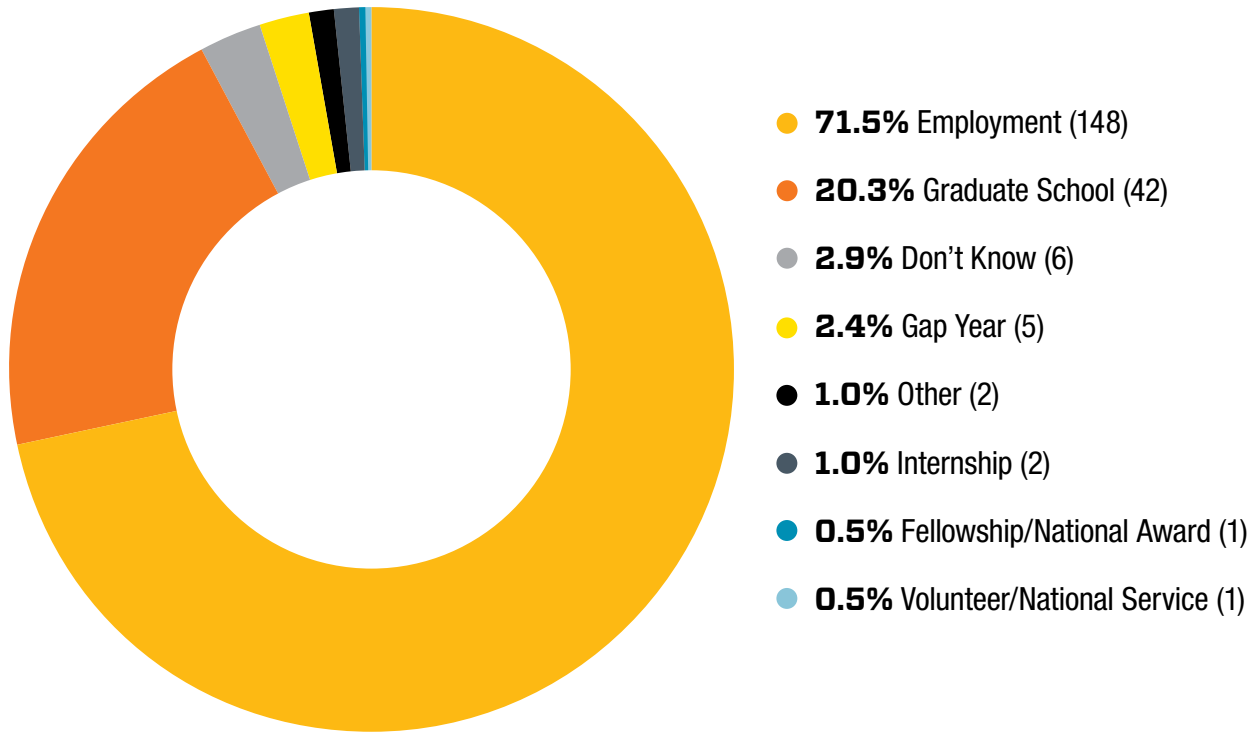
1.5%
Transgender (3)

12.6%
First-generation (26)

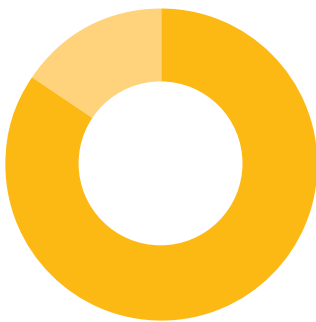
27.5%
Historically Underrepresented (67)
(i.e., African American [Black],
Hispanic/Latinx or American Indian)

Plans for Fall 2022

208 valid responses/225 students (92% response rate)



Employment Info



- **84.5%** Accepted Position (125)
- **15.5%** Still Seeking (23)



Grad School Info



- **100%** Accepted (42)



Employment Info

Median Salary	\$117,500
Median Bonus	\$20,000
Median Housing Allowance	\$7,000

Received any of the following:

Bonus	65.6%
Housing Allowance	29.6%
Stock Options	62.4%

Top Three Employers

1. Meta (9)
2. Microsoft (6)
3. California Institute of Technology (5)

Three Most Important Criteria When Choosing an Employer

1. Work/Life Balance
2. Starting Salary
3. Geographic Location



Graduate School Info

Degree Pursued

PhD	69.0%
M.A./M.S.	16.7%
M.S./PhD	7.1%
Other	4.8%
M.D./PhD	2.4%

Top Graduate Schools

- Stanford University (5)
- University of California, Berkeley (4), University of California, Los Angeles (4)
- Cornell University (3), University of California, Irvine (3), University of California, San Diego (3)

Top Fields of Study

- Computer Science
- Physics
- Applied Mathematics
- Applied Physics
- Communications
- Mathematics

Schools

Brown University
Carnegie Mellon University
Cornell University
Duke University
Georgetown University
Northwestern University
Princeton University
Rockefeller University

Rutgers University
Scripps Institute of Oceanography
Stanford University
SUNY Stony Brook
University of California, Berkeley
University of California, Irvine
University of California, Los Angeles
University of California, San Diego

University of California, San Francisco
University of California, Santa Barbara
University of Illinois at Urbana-Champaign
University of Pennsylvania
University of Southern California
University of Washington
Weill Cornell Medical College
Yale University

Companies

Accenture
Adobe
Aerodyne Research Inc.
Airbnb
Amazon
Apple
Applied Medical
Areté
Aspiration
Astranis
Atlassian
Bear Robotics
Better Mortgage
Beyond Meat
Bloomberg
California Institute of Technology
Citi
Cognizant
CrowdStrike
Databricks
Dropbox
Duolingo
EasyPost
Eaton
Expedia Group
ExtraHop
FixturFab
Flycoin

Forward
Goldman Sachs
Google
Gusto
Heliogen
Honeybee Robotics
Hulu
Instabase
Intel
Jane Street
Johns Hopkins Applied Physics Laboratory
JPMorgan Chase
Juniper
KAV
Litepoint
Los Angeles Department of Transportation
Lyft
Memverge
Meta
Microsoft
Millennium Space Systems
Miso Robotics
Niantic
Nike
Northrop Grumman
Nvidia
Palantir
Parallel Systems

Pinterest
Plaid
Pure Storage
Qualtrics
Remitly Inc.
Roblox
Samba TV
SAP
Schmidt Academy
Second Order Effects
ServiceNow
SpaceX
Stanford
Stripe
Tennessee Valley Authority
Terabase
Thoughtworks
Thumbtack
TrellisWare Technologies Inc.
UCSF School of Medicine
United States Navy
Visa
Weill Cornell Medicine
Wells Fargo
ZipRecruiter
Zoox

