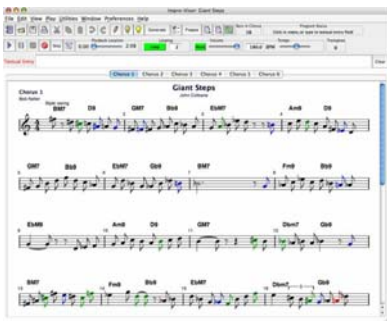
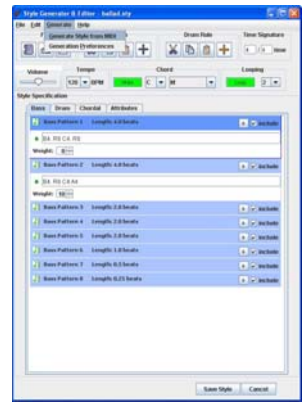


Impro-Visor: Style Editor & Extractor

Sayuri Soejima,
Brandy McMenemy,
Jim Herold
Bob Keller



Leadsheet view



Style specification view

Main Goal

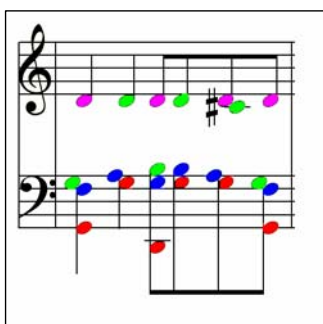
- General area of study: musical education
- Auto-accompaniment by a computer
 - Computer should quickly generate a style specification from a performance of a particular piece
 - Solves the disadvantages that arise when humans must program in the style specifications manually, which are as follows:
 - Human must have
 - » Musical background
 - » Familiarity with a particular program's data representation
 - » Willingness to acquire necessary skills to create his/her own style specifications
 - Gives new ideas to beginners and experts; provides a new tool for experts

Devised Method for Extracting Chord Patterns from MIDI

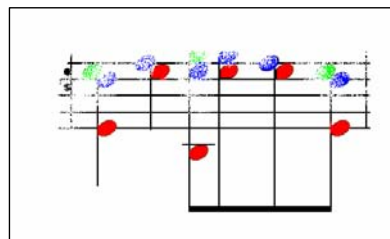
Look at the “bottom line” to create patterns (shown in red here)

One hit = chord hit

Algorithm for creating style specifications from the above analysis



Raw MIDI input



Extracted bottom line



(X4 X4 X8 X8 X8 X8)

Created pattern

Acknowledgements

The Baker Foundation
National Science Foundation
Band in a Box (P.G. Music)
Stephen Jones '07

