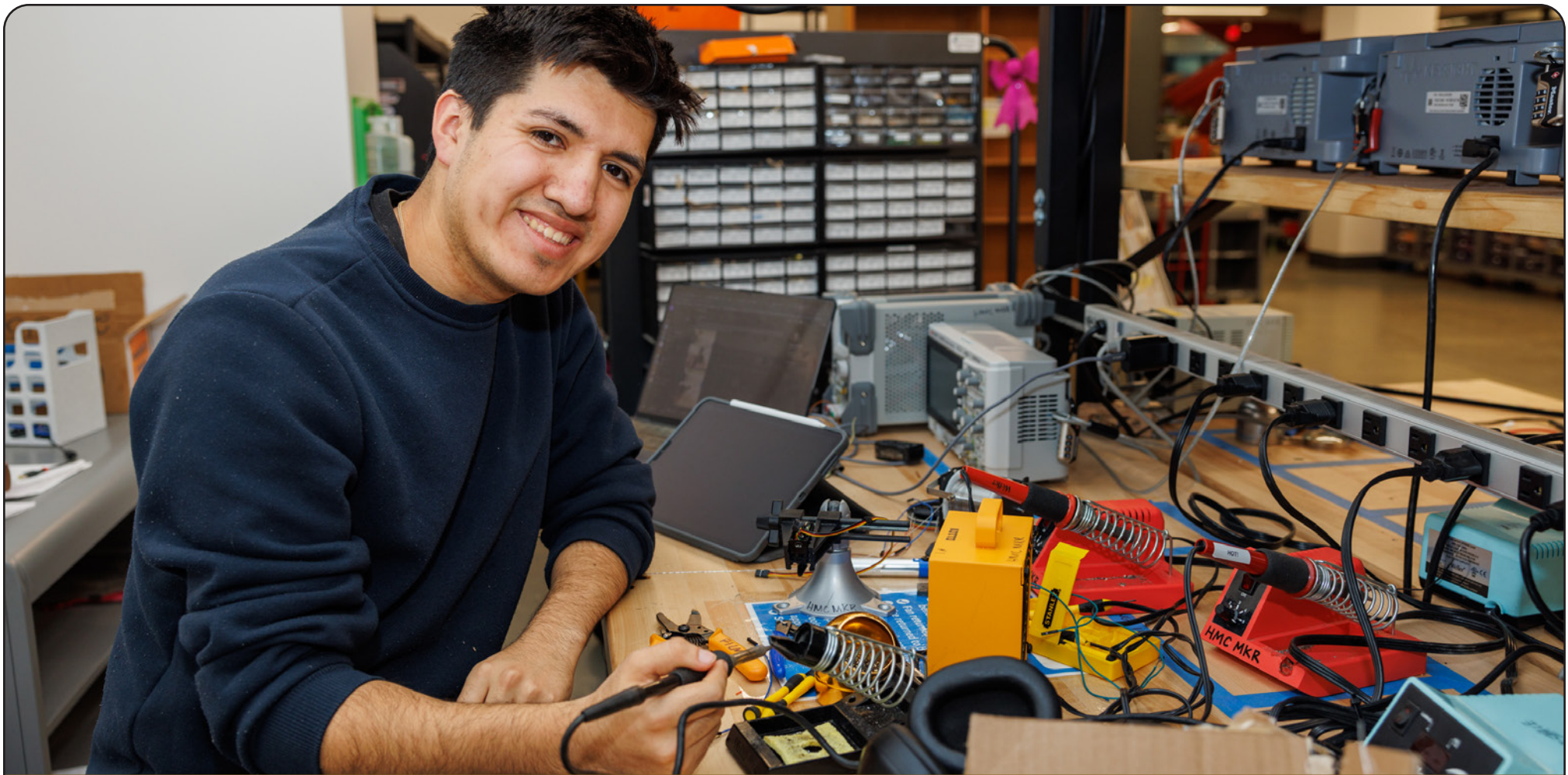


CAMPAIGN PROSPECTUS

Case for Support

January 2026

**HARVEY
MUDD
COLLEGE**



The World Needs Harvey Mudd

Today's world faces profoundly different challenges than the ones that shaped the founding of Harvey Mudd College. The problems are more global, more complex, more polarizing, and more urgent. From wildfires to emerging pandemic threats to the ethics of artificial intelligence to space exploration, finding solutions will require the collaboration, communication, and creativity of multi-disciplinary teams that are well-trained and well-rounded. In short, the world needs the kinds of individuals educated at Harvey Mudd College.

President's Message



Nearly 70 years ago, our founders created a college that was rooted in an innovative idea—that the sciences, engineering, and mathematics, grounded in the humanities and driven by a commitment to the common good, could shape leaders who would change the world. **Now, no other institution combines the rigor of STEM with the depth of the humanities, social sciences, and the arts in quite the way we do.**

Today, that vision and capability is more urgent than ever.

Humanity faces a future shaped by tremendous complexity: the ethics of artificial intelligence, the realities of a changing climate, the pace of technological disruption, the challenges of novel global health threats, and the growing need for varied perspectives to ensure democracy's future. These challenges require not just technical solutions, but a new kind of STEM leadership—one that is rigorous, ethical, interdisciplinary, and deeply human.

This is why we are launching the most ambitious fundraising campaign in our history—our moonshot. Guided by our strategic plan, *STEM for a Better World*, it is a call to action for our entire community: alumni, parents, friends, trustees, students, faculty, staff, and partners. Together, we can ensure that Harvey Mudd leads in educational innovation, deepens our impact through transformational partnerships, and creates spaces and support systems for students from all backgrounds to lead with creativity, compassion, and confidence.

Our goals are bold because our world faces monumental challenges.

With your partnership, we will invest in supporting talented students, hands-on research and educational innovation, climate leadership, and the transformational infrastructure required to realize our vision. Mudders have always known how to turn small steps into giant leaps, creating change that resonates far beyond our campus. **We invite you to take this moonshot with us—together, let's shape the future we know is possible.**

Sincerely,

A handwritten signature in black ink that reads "Harriet". The signature is fluid and cursive, written in a professional style.

Harriet B. Nembhard
President

Different by Design



Harvey Mudd College's founders recognized the need for a new generation of scientific and engineering leaders who could navigate unprecedented challenges and understand the impact of their work on humanity. From its founding, the College was always meant to be small by design—intimate enough to challenge each student, yet broad enough to nurture thinkers who cross disciplinary boundaries.

Our educational philosophy remains essential. We shape graduates who have technical expertise and can lead teams, who are deep thinkers and comprehend societal impact, and who work across disciplines and are agents of change.

Our pedagogy and teaching innovations have had an outsized impact on STEM education across the nation. Our award-winning Clinic Program has connected student teams with corporate, nonprofit, and government sponsors to solve real-world problems for over 60 years.

We do not just teach subjects; we open the world to our students. Mudd alumni include computer scientists, astronauts, professors, software developers, entrepreneurs, diplomats, lawyers, screenwriters, and producers of popular films and Broadway shows—a testament to the breadth of possibility that our distinctive, STEM-focused liberal arts education offers. The collective impact of our 8,200-plus alumni shapes industries, influences public policy, and transforms communities.

Our track record and national recognitions place us in a rarefied tier of academic institutions. The question isn't what we've done. It's where will we go next.

100% OF STUDENTS:

Every student completes a rigorous Core Curriculum in the humanities, social sciences, and the arts, regardless of their STEM major.

#2 ENGINEERING PROGRAM:

Consistently ranked among the nation's top two undergraduate engineering programs by *U.S. News & World Report*.

RESEARCH LEADERSHIP:

Undergraduates lead high-level research projects typically reserved for graduate students, earning HMC recognition as a top Research College by the American Council on Education and the Carnegie Foundation for the Advancement of Teaching.

TOP 1% FOR PHDS:

Ranked among the top colleges in the U.S. for the percentage of graduates per capita who go on to earn a PhD in their fields.

HIGH-VALUE INVESTMENT:

Consistently recognized for the highest return on investment, proving the power of an ethical, interdisciplinary STEM education.

Realizing the Future: The Campaign for Harvey Mudd College

The Campaign for Harvey Mudd College is a \$250 million comprehensive fundraising campaign guided by our strategic plan, *STEM for a Better World*. Five broad, highly impactful investment areas serve as the engines that will turn our bold strategy into tangible, positive change that will impact our community and humanity:

PILLAR
1

Living and Learning Infrastructure – Modernizing our campus to match the caliber of our students. By developing a premier Center for Interdisciplinary Science and Engineering building and reimagining our student-centric spaces, we are creating the launchpads for the next generation of breakthroughs and supportive environments.

PILLAR
2

Academic Leadership – Empowering master scholar-mentors. Endowed professorships and directorships ensure that our outstanding faculty members remain national leaders in STEM pedagogy and high-impact faculty-student research.

PILLAR
3

Access and Opportunity – Securing exceptional intellectual drive. By eliminating loans, expanding scholarships, and building our pipeline, we ensure that our students' trajectory is determined by their talent and ambition rather than their financial background.

PILLAR
4

The Innovation Accelerator – A dedicated platform for bold ideas. The IA fuels our faculty-led laboratories in STEM education and transformative partnerships, which allows Harvey Mudd to develop new and innovative frameworks to guide these fields— from data science and AI to health technologies and climate.

PILLAR
5

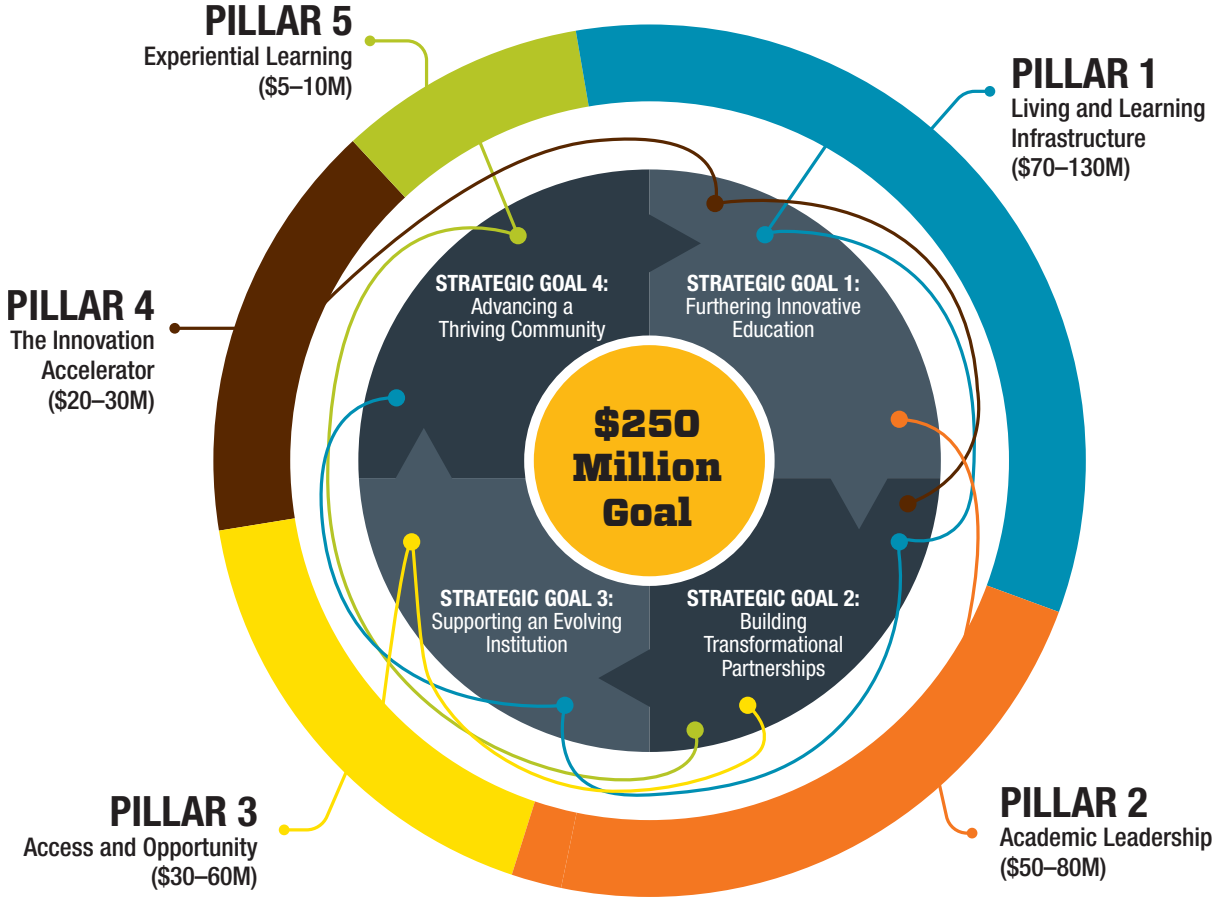
Experiential Learning – Moving education beyond the classroom. We are expanding the Clinic Program, Summer Research opportunities, and civic engagement to ensure every Mudd graduate with outstanding leadership skills and robust professional networks.

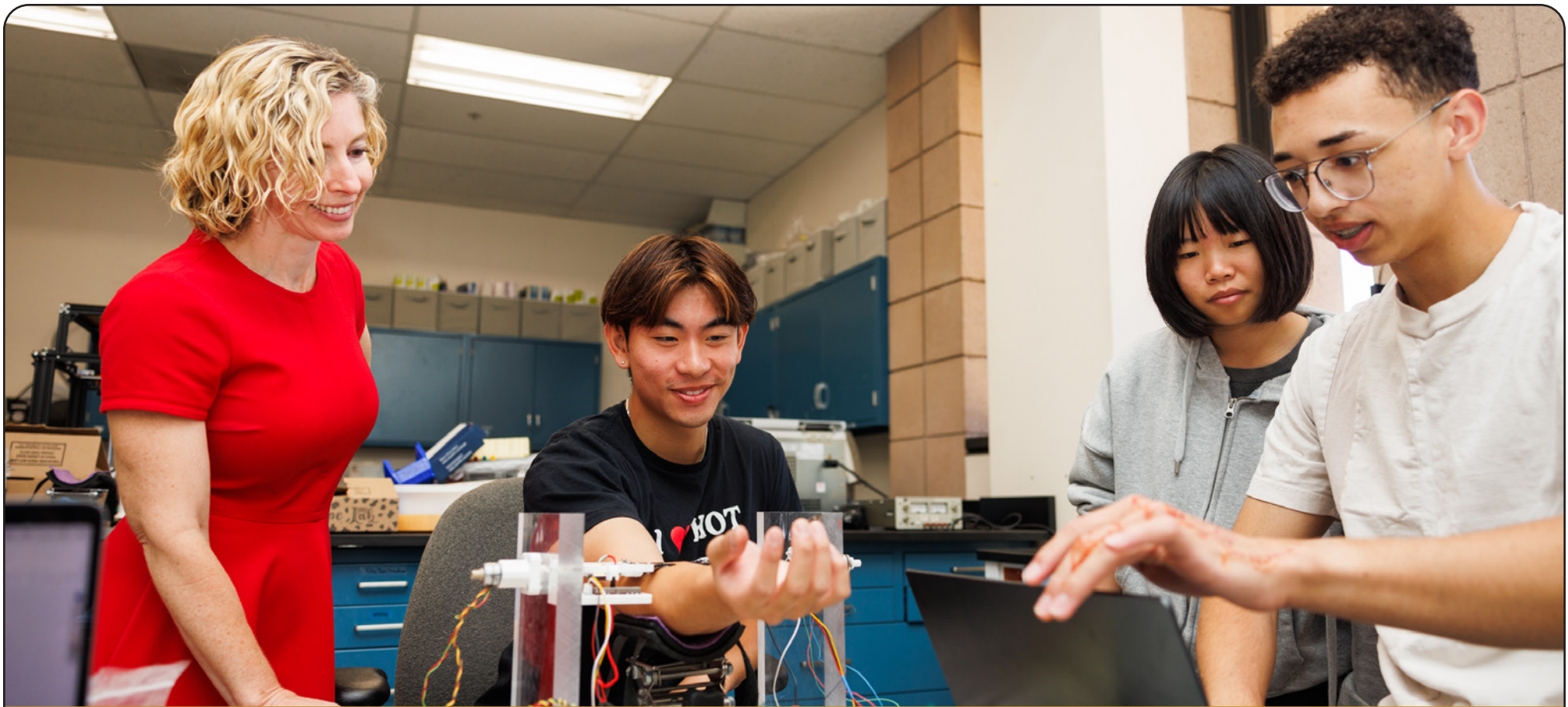
Together, these investments represent a \$250 million commitment to the belief that the world needs more Mudders.

Strategic Alignment

The Campaign for Harvey Mudd College directly fuels the interconnected goals outlined in the College’s strategic plan. While each investment pillar shown in the diagram below provides a ballast for the campaign, their combined impact intentionally integrates across our four strategic goals to ensure that every gift propels the entire institution forward.

Rather than viewing these priorities as isolated initiatives, we invite you to engage with this holistic narrative of institutional transformation where the people, the process, and the places work in concert to achieve our ambitious strategic goals. As you move through the following pages, you will see how these five pillars weave through a singular vision to redefine the boundaries of a liberal arts STEM education and create a brighter future for our world through the next generation of talented leaders.





THE CHANGE AGENTS

Investing in the People Who Power the Vision

STEM fields are evolving at an unparalleled pace. Breakthroughs in artificial intelligence, quantum computing, and biotech are reshaping the very fabric of society. Yet, history teaches us that the most sophisticated laboratory is only as effective as the minds within it. At Harvey Mudd, we don't just recruit students; we shape the future of responsible STEM leadership. We believe that engineers, scientists, and mathematicians who are trained in the humanities, social sciences, and the arts will be prepared to ask the right questions and find better solutions.

Securing the Brightest Minds

A Harvey Mudd education is a public good with a private intensity. We must be able to recruit the world's most capable students based on their intellectual ambition and their potential to lead. Philanthropy is the essential engine behind this promise, ensuring that the Harvey Mudd community remains a concentrated hub of talent, ready to solve the most pressing challenges of our time.

The Harvey Mudd Promise

Financial aid is our most strategic tool for securing talent. The **Harvey Mudd Promise** eliminates loans from our financial aid packages, making the College more attractive to families and more empowering for our students. Instead of managing the burden of debt, Harvey Mudd alumni will be free to choose their next steps based on their individual interests and aspirations.

Impact Scholarships

The **President's Scholars Program** has been a flagship program for identifying and attracting the thinkers and doers who will define the next half-century of scientific progress by providing full tuition scholarships. The new **Mudd Opportunities for Research Experience (MORE) Program** will provide each scholar with a \$25,000 annual scholarship and a guaranteed opportunity for a summer of paid, faculty-mentored research starting in their first year. Our goal is to create additional Impact Scholarship opportunities, allowing us to further expand access and affordability to today's brightest students.

Cultivating the Future of STEM

To ensure a strong future pipeline of STEM graduates with a solid grounding in the "Harvey Mudd way," we have launched the **Advanced STEAM Pre-college Immersion for Research and Exploration (ASPIRE) High School Summer Academy**. This intensive, residential program invites high-achieving high school students into our classrooms and labs to work alongside faculty and student mentors.



THE COST OF EXCELLENCE IN STEM.
The demand for cutting-edge facilities and world-class faculty has made STEM the most expensive undergraduate degree to deliver. According to the American Institutes for Research, engineering degrees require nearly double the average spending of other disciplines.

Empowering Visionary Academic Leaders

The defining characteristic of a Harvey Mudd education is the proximity between world-class scholar-mentors and undergraduate students. In an era where large research universities often delegate instruction to intermediaries, Harvey Mudd remains a high-touch environment where students work directly with exceptional faculty on real discovery. An investment in these academic leaders ensures that our most visionary minds are focused where they can have the greatest impact: mentoring the next generation of passionate problem-solvers.

Climate + Initiative

We are seeking to establish specialized leadership roles at the intersection of the environment and our core disciplines. Chairs in Climate + Physics, Climate + Engineering, and Climate + Humanities, Social Sciences, and the Arts will lead our interdisciplinary response to the challenges facing the environment.

Artificial Intelligence

As AI continues to reshape the landscape of knowledge, Harvey Mudd must remain the standard-bearer for both technical excellence and ethical engagement. By attracting and developing visionary faculty who work at the forefront of AI, we ensure that the Harvey Mudd voice remains an essential and responsible force in the development of transformative technologies.

Endowed Professorships

These named positions are designed to recognize and support the foundational leaders who drive innovation within our academic units and across the College. They provide the resources and flexibility required for our faculty to imagine new possibilities for the curriculum and to foster critical interdisciplinary research.

Clinic Directorships

The Clinic Program is the ultimate expression of the Harvey Mudd mission, transforming academic theory into industry-sponsored practice. Supporting the faculty leaders who direct our Clinic projects is an essential component to maintaining the real-world impact of this signature program. These directorships ensure that the bridge between the classroom and the professional world remains robust, providing our students with the high-fidelity professional experiences that distinguish a Mudd graduate in the global workforce.



Offering Students Real-World Experiences

Our students don't wait until graduation to change the world. We give them the tools to do it from their first year on campus.

The Entrepreneurship Engine

High-potential ideas emerge from our labs, Clinics, and courses. We catalyze this energy by providing a yearlong entrepreneurship practicum course, connecting students to alumni entrepreneurs to provide mentorship opportunities, and helping them use their summers to develop solutions to real-world challenges. Entrepreneurship built on this STEM strength will propel the launch of impactful, STEM-driven startups.

Career Treks

"Career Treks" are faculty- and staff-led experiential learning opportunities that take students off-campus to engage directly with employers, alumni, and industry leaders through site visits, panels, and networking conversations. We are expanding Career Treks to provide immersive field experiences. Philanthropy ensures every student—regardless of their financial background—can connect their academic passions to professional networks in Silicon Valley, D.C., NYC, and beyond.

Clinic Program

For 60+ years, our Clinic Program has connected student teams with corporate, nonprofit, and government sponsors to solve real-world problems. It is the national model in experience-based, undergraduate STEM education. Philanthropy allows us to create partnerships with emerging tech leaders and government agencies as well as to broaden the reach and impact of Clinic partnerships to benefit under-resourced organizations and communities.



Students in the fall 2025 **Enterprise and Entrepreneurs** course contributed their creativity and ingenuity to create ideas for 28 startup ventures. HMC student projects included a company that produces biodegradable algae-based band aids that promote healing; an app that helps people take better photos of their friends; a smart event-discovery app that helps users find local events, activities and gatherings based on their interests, location and social circles; and technology that uses bioluminescence imaging to produce real-time toxicology results for in vitro and in vivo testing.

STUDENT SUCCESS BY THE NUMBERS

#1 for Early Career Pay (Payscale)

#1 for College ROI (Payscale)

#7 among the Best Schools for Internships (Private Schools) by the Princeton Review

Civic and Community Engagement

At Harvey Mudd, we are advancing a visionary commitment to the intersection of science, technology, and civic life by ensuring our students recognize their technical expertise as a vital instrument for societal contribution. This philosophy is the cornerstone of our membership in the national **College Presidents for Civic Preparedness** initiative. We believe that a world-class STEM education is incomplete without a profound understanding of democratic values, ethical reasoning, and public purpose.

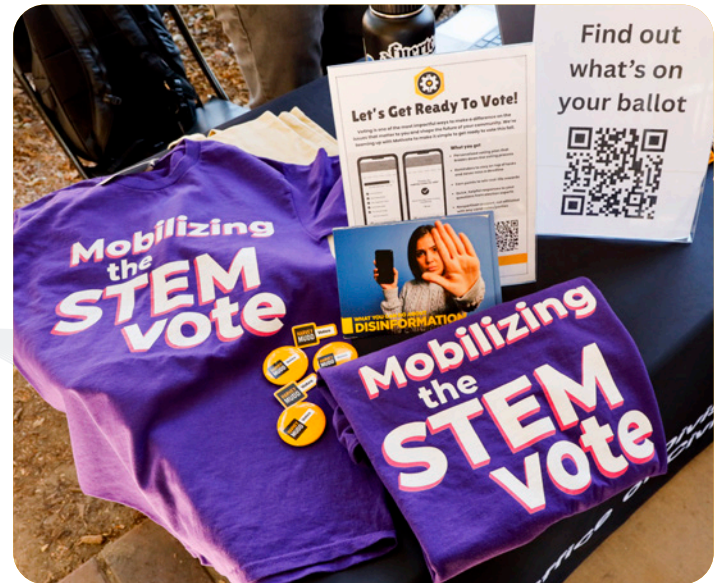
Designing for a Robust Democracy

An important element of this commitment is an ambitious interdisciplinary initiative that explores what happens when the structures of democracy are treated as a complex design challenge at the intersection of art, engineering, and mathematics. Student-led projects explore how we build and strengthen the systems that govern and sustain our society.

Relational Intelligence in a Technical Age

We are reimagining how our students lead with a civic mindset through a new standard for connection. This initiative reframes leadership as a practice of intentional connection, moving beyond traditional performance pressure to cultivate relational intelligence and deep, reflective learning. Through a structured pedagogical framework, our future innovators learn to navigate the unique ethical dilemmas of the algorithmic age with empathy and resilience.

These and other ongoing initiatives ensure that the Harvey Mudd experience remains rooted in the belief that the world's most complex problems require leaders who value human connection alongside analytical thinking. By integrating the technical with the civic and the relational, we are equipping our students to lead with a profound sense of purpose. Your philanthropy ensures that Harvey Mudd continues to set the national standard for a human-centered STEM education that truly serves the common good.





THE BLUEPRINT

Charting the STEM Frontier

The pace of scientific and technological change has never been faster. In a world of “move fast and break things,” Harvey Mudd moves with purpose. We do not just react to breakthroughs in AI, biotech, or quantum computing; we author the interdisciplinary frameworks that guide them. By doing so, we ensure that Harvey Mudd defines what an undergraduate liberal arts STEM education can achieve.

Lead in Climate Education and Action

Driving our commitment to global sustainability is the **Hixon Center for Climate and the Environment**, which serves as the strategic catalyst for integrating climate-focused discovery and action. Rather than treating environmental science as an isolated discipline, we are embedding climate awareness into the core of the Harvey Mudd experience. This approach ensures that every student, regardless of their primary field, graduates with the scientific literacy and ethical framework necessary to address the escalating environmental challenges of the 21st century.

The Climate + Initiative: Redefining Interdisciplinary Rigor

We are actively transforming the STEM landscape through our Climate+ joint majors. We have already launched Climate + CS, Climate + Chemistry, Climate + Math and Climate + Biology; with additional investment, our future work will entail launching a Climate + Physics program. In addition, we are exploring programs to pair climate science with engineering as well as with the humanities, social sciences, and the arts.

A Laboratory for Climate Solutions

This work extends beyond the classroom and across our campus, where student-led initiatives and clean energy research provide an immediate proving ground for the sustainable technologies of tomorrow. Our leadership is advanced through Clinic projects and immersive experiences that challenge our students to solve complex climate obstacles for global industry partners. Through these sustained efforts in climate-focused research, Harvey Mudd serves as a vital bridge between climate solutions and industrial application, ensuring that our work translates into measurable impact for people and the planet.



Advance STEM Education and Practice: The Innovation Accelerator

The Innovation Accelerator (IA) has quickly become Harvey Mudd's most dynamic platform for discovery. It is a unifying magnet that brings together faculty and staff from across disciplines to imagine new possibilities for the future of STEM education. In its first year alone, the IA moved projects from a "bold idea" to a "successful pilot," culminating in an Innovation Showcase that proved Harvey Mudd is ready to lead. The IA platform is a proven mechanism ready for scale. Your philanthropy is an investment that drives the future of STEM education.

Established IA Labs

- **IA Lab for Data Science and Social Impact** integrates technical expertise with a human focus to turn big data into a powerful tool to address critical issues like climate change and public health.
- **IA Lab for Emerging Health Technology** prepares a new generation of innovators to solve complex healthcare challenges in areas like tissue engineering, medical device development, and personalized medicine.
- **IA Lab for Thriving in STEM** creates immersive models for success based on peer mentoring and intensive skill building.



Emerging IA Labs

- **The IA Lab for Artificial Intelligence** explores the technical frontiers and human dimensions of a future where human and machine intelligence co-exist.
- **The IA Lab for Entrepreneurship** provides the early stage capital and structured validation needed to establish a high-efficiency pathway for STEM-driven startups.
- **The IA Lab for Interdisciplinary Science and Engineering** fosters shared research in vital themes such as renewable energy, clean water, and revolutionary materials by bridging the methodologies of multiple STEM fields.



THE LAUNCHPAD

Building the Infrastructure of Discovery

Every great leap in history required a base of operations designed for the task. To solve global, complex, and urgent problems, Mudders need a physical environment that mirrors their own excellence and interdisciplinary nature.

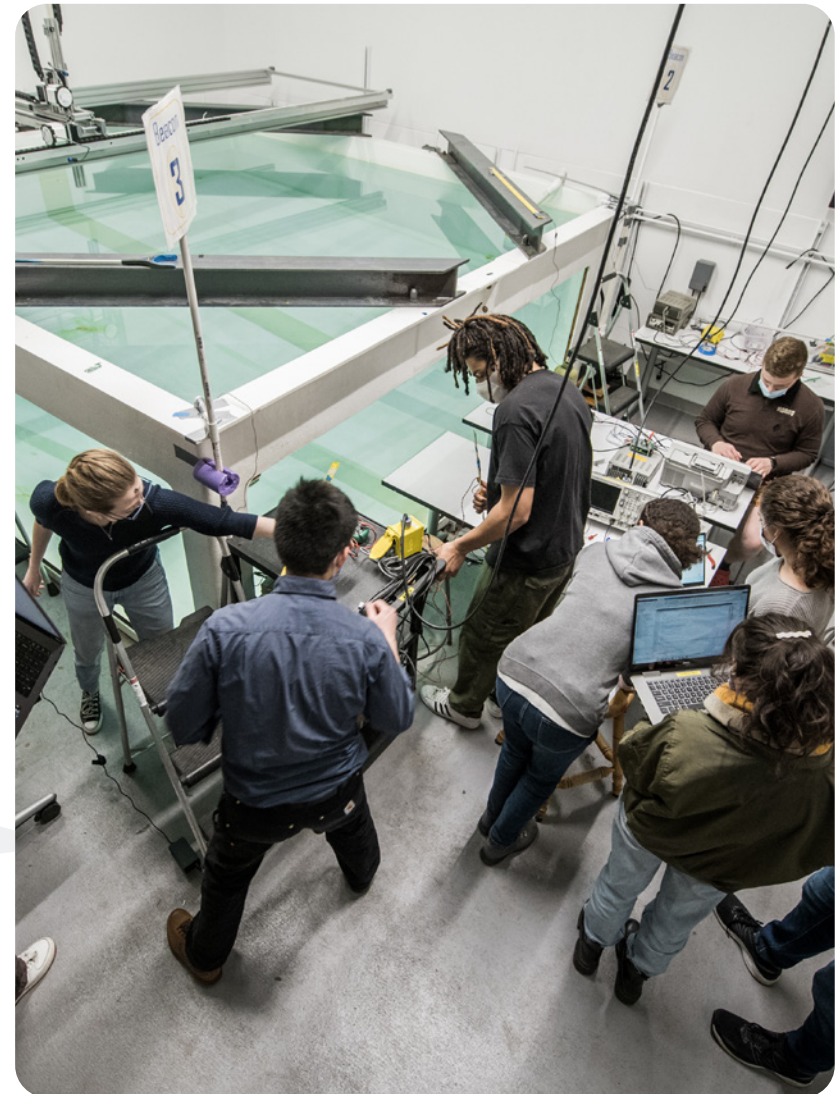
The Academic Launchpad – The Center for Interdisciplinary Science and Engineering

As the lines between science and engineering blur, the next generation of breakthroughs will happen at the intersections of academic disciplines. To lead in this new era, Harvey Mudd is creating a facility that removes the physical barriers to collaboration, allowing faculty and students to move from theory to prototype at the speed of thought.

This state-of-the-art academic building is key to our moonshot and is designed to:

- **Support interdisciplinary research**, curricula, and hands-on learning
- **Serve as home** to the Innovation Accelerator and other initiatives
- **Empower students and faculty** to transcend disciplinary boundaries
- **Provide modern physics and chemistry laboratories** and drive new, collaborative opportunities
- **House prototyping laboratories**, classrooms, faculty offices, and new centers and institutes
- **Host partnerships**, offering industry and nonprofit partners access to a high-tech environment to co-create solutions

This building and its programs will be the engine driving the next generation of Mudd breakthroughs—across AI, sustainability, climate science, entrepreneurship, energy, transportation, and more. It will also be a model and laboratory for our community's commitment to a climate-resilient future. With this foundation, Harvey Mudd will not only stay competitive, it will lead.



The Community Launchpad: Cultivating a Thriving Student Experience

At Harvey Mudd, academic excellence and holistic wellbeing are inseparable. To sustain our world-class STEM education, students require an environment designed for restoration and connection. We are evolving our campus footprint to prioritize the mental, physical, and social bonds that define the Mudd experience. Philanthropy in these areas is an investment in human capital. By supporting these environments, you ensure that our students flourish, graduating with the confidence and resilience to lead in a complex world.

Evolving Residential Life

With nearly all students living on campus, our residential spaces are the heart of our students' experience. We are modernizing these spaces to support the diverse needs of today's high achievers through:

- **Adaptable Living and Wellness-first Design** that creates sensory-friendly environments while increasing single-room options and creating spaces for prayer and contemplation that help our students recharge.
- **Professional Readiness** offerings that integrate tech-enabled interview suite spaces that ensure students can compete globally from their campus home.



Reimagining Student Connection

We are re-energizing our dynamic student hubs—including Platt Campus Center and Linde Activities Center—to foster deeper connection and belonging through:

- **Collaborative Social Hubs** that provide welcoming space for formal gatherings, student organizations and informal “whiteboard sessions” where our community grows.
- **Centralized Support and Mentorship** opportunities that bring wellbeing resources and faculty/staff interaction to the heart of student activity to lower barriers to offering guidance and support.
- **Inclusion and Belonging** offerings that ensure that every space—from communal kitchen areas to lounges—reflects our commitment to a compassionate community where everyone can thrive.

A Call to Action: Take the Moonshot with Us

Harvey Mudd College stands at a pivotal moment—one defined by nearly 70 years of excellence and energized by a strategic vision for what we believe the world needs next. We have the roadmap in our strategic plan, *STEM for a Better World*. We have the proof in our alumni who are leading industries and in our students who are already addressing the world's greatest challenges.

Now, we have the architecture for our ambition.

Through this \$250 million campaign, we are making a definitive choice to lead. By investing in our five pillars—**Living and Learning Infrastructure**, **Academic Leadership**, **Access and Opportunity**, **The Innovation Accelerator**, and **Experiential Learning**—we are ensuring that Harvey Mudd College's legacy of excellence continues to resonate far beyond our campus.

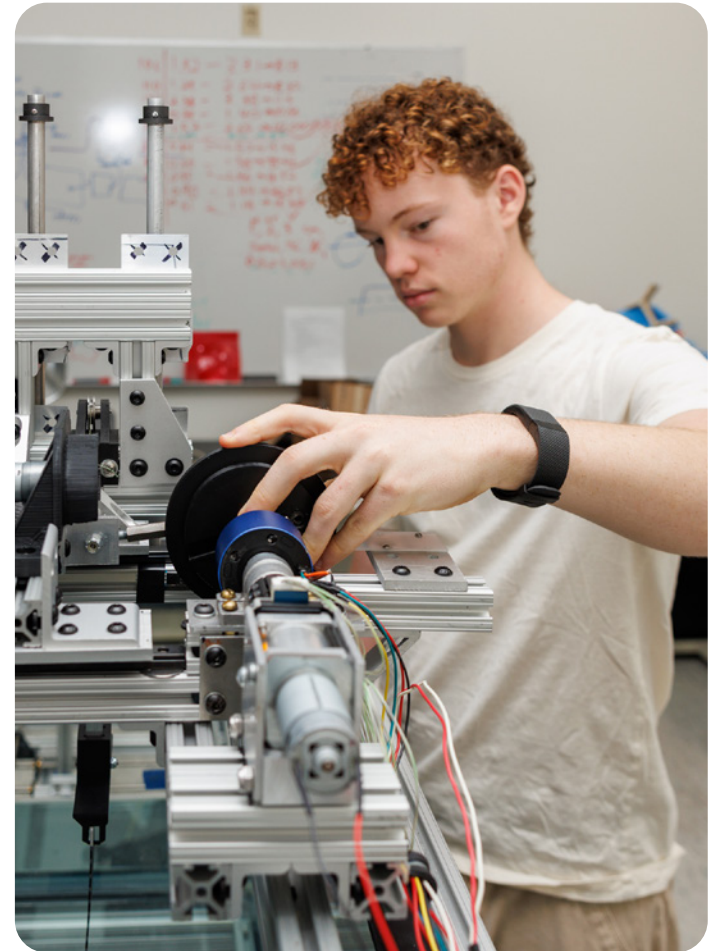
The challenges of 2026 and beyond—climate resilience, ethical AI, healthy communities—will not be solved by technical expertise alone. They require leaders who can bridge disciplines, communicate across divides, and act with a deep sense of commitment to human flourishing.

The world needs Harvey Mudd.

Philanthropy is the essential fuel that transforms our strategic plan into practice. Your partnership is the catalyst allowing us to eliminate financial barriers for the world's most talented students and to build the types of innovative and interdisciplinary spaces where serendipitous collaborations help ensure that the next breakthroughs can happen—all while empowering the faculty scholar-mentors who guide it all.

This is our moonshot. It is bold, it is urgent, and it is uniquely Harvey Mudd. We invite you to join us on this journey—not just to sustain an institution, but to shape a future we know is possible.

Let's take this giant leap together.





THANK YOU

Contact Information:

Harriet B. Nembhard

President

909.621.8120 | harriet@hmc.edu

Jennifer Eccles

Vice President for Advancement

909.607.7069 | jeccles@hmc.edu

**HARVEY
MUDD
COLLEGE**